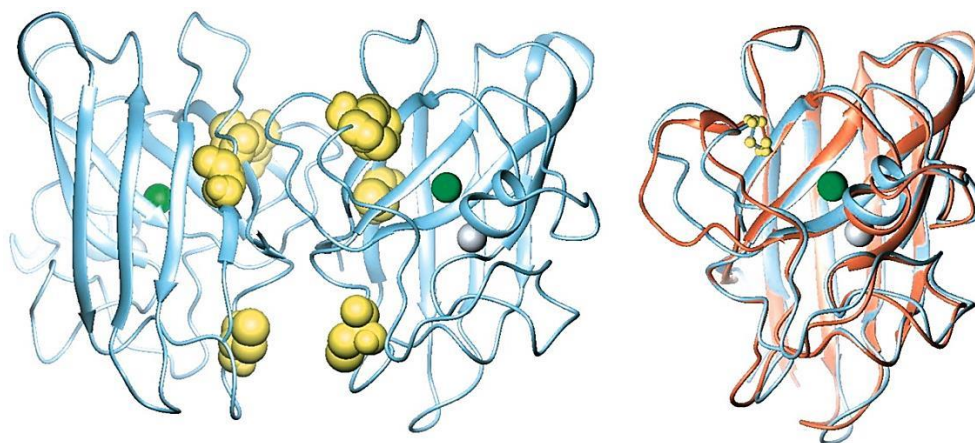


The Department of Chemistry
And the Department of Biochemistry & Biophysics
Jointly Present

2014 Chemical Biophysics Mini-Symposium

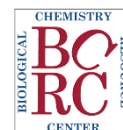
Protein Folding



Thursday, November 13, 2014
Lynch Auditorium, Chemistry Building

- 10:00-10:50** **Art Horwich**, Yale University
Mutant SOD1 Misfolding in ALS
- 10:50-11:40** **Lynne Regan**, Yale University
Folding and Applications of Repeat Proteins
- 11:45-1:15** **Lunch and Poster Session, Nobel Hall**
- 1:20-1:40** **Tina Ho**, Michael Marks Laboratory
Disulfide Bond Formation Regulates PMEL Amyloid Potential
- 1:40-2:30** **Keynote: Dennis Selkoe**, Harvard Medical School
New Insights into Protein Misfolding in Alzheimer's and Parkinson's Diseases

Co-Sponsored by



For more information, please email scugras@sas.upenn.edu